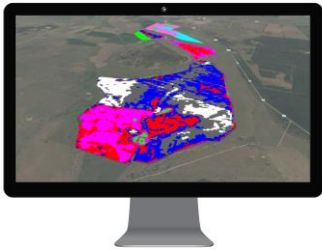


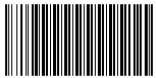
Identify your soil zones

Draw out your paddocks and view your different soil types across your farm. Use the maps to reduce fertiliser use and improve land management.



Take a sample

Use the FarmLab app to take your samples from the right locations. Just scan the sample bag and submit it to one of our partner-labs using the mobile app.



Review the results

Review all results mapped back across your zones. Monitor changes over time and receive the results back into your Farm Management Software.

Improve your soil with FARM LAB

Why Farmlab?

With an integrated mobile app and web application, we give you the ability to make quick, informed, and precise decisions around soil and land management that will help to you to build strong soil strategies and save money and resources. Here's how:

- Creating soil zones helps you manage similar soil types across your property. Don't waste money applying inputs to areas that don't respond or sampling where you don't need to.
- We make testing simple and completely paperless, meaning less time and errors spent sampling, transcribing results and chasing up labs.
- All your soil data is digitised, making it easier for you to track trends and changes over time. Use this to make better long-term decisions about land use.
- Have results returned to your current Farm Management Software for interpretation and access in one spot.
- Try it yourself. We offer a free one-month subscription to our Pro-Farmer plan by following the below link and entering the invite Code: 'farmsecrets-web'

<https://my.farmlab.com.au/auth/signup>

For more information visit

www.farmlab.com.au

or call (02) 9052 4924

