

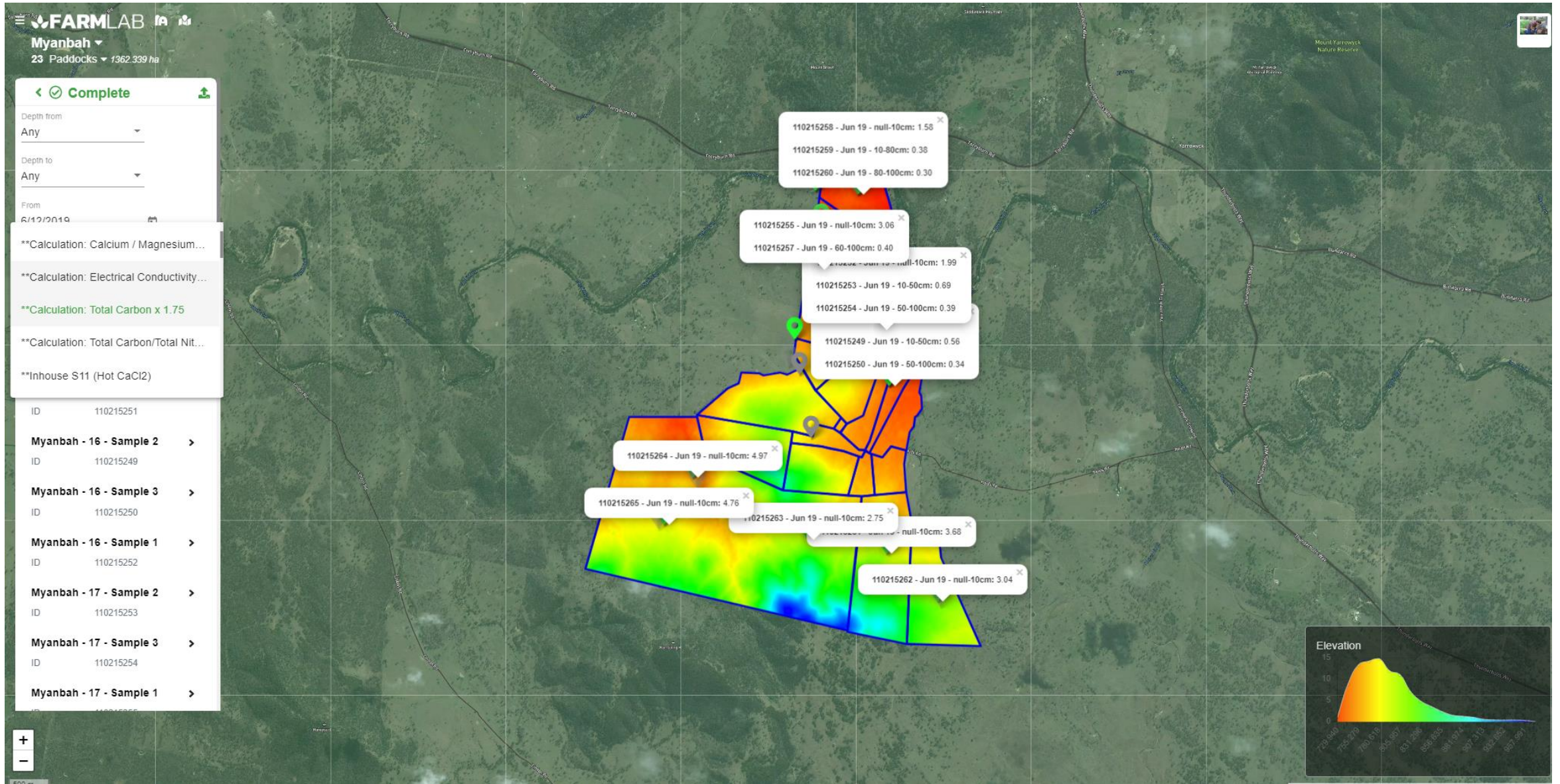
# **Managing and Measuring Carbon**

# OUR BACKGROUND

---

- We started FarmLab in 2016 as a solution to the problem:  
How do we link soil carbon to profitability?
- Mobile app in 2017 to help test soil
- Web app in 2019 to map those tests.





# **WHY CARBON?**



Yield



Resilience





# OPTION 1 – MEASURING USING EMISSIONS REDUCTION FUND PROCESS (AUS)

---

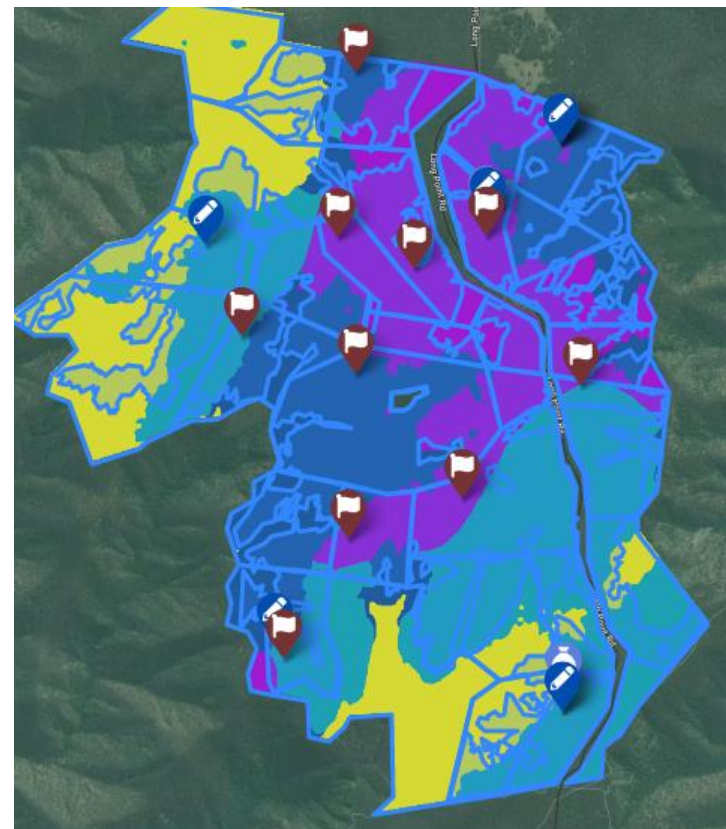
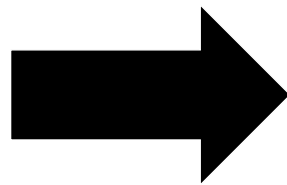
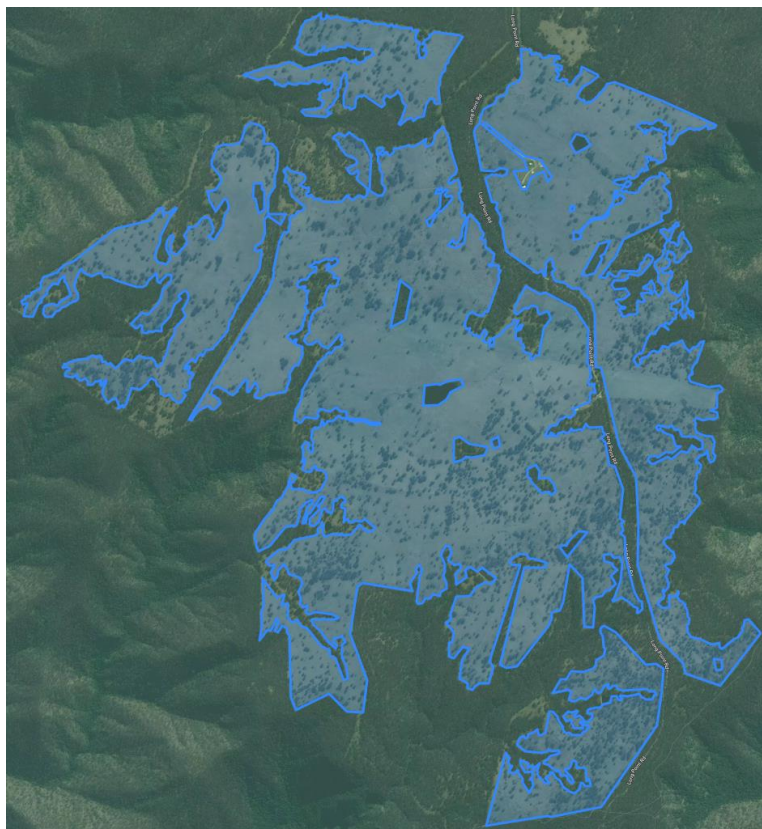
High Cost – High Reward

Random Stratified Sampling

Use a qualified consultant

Sample 0-30cm, 30-100cm









## **OPTION 2 – ‘LONE RANGER’**

---

Low Cost – but still a high reward!

Sample to 30cm or greater to ensure you are locking in carbon at depth

Sample widely. If you take cores (sub-samples) to combine, ensure you don't mix soil types



# OPTION 3 – HOME GARDENER

You can save some money by sampling all of your beds at once (just make sure they're improved the same way at the same time)

Sample to 30cm



# **APPROACH**

If you're new, start with a few soil tests, understand your current carbon levels or get some advice.

When you're confident on your approach, look at a soil carbon project – but do your homework!



